

# OREGON PERS

PUBLIC EMPLOYEES RETIREMENT SYSTEM



## **Employer Outreach Winter 2024**

**Theresa Tabish and  
Alison Burman**

**Employer Service Center**



# Agenda

---

- Preparing for year-end
- Employer support
- Questions and answers

# Preparing for year-end

---

- Year-end reconciliation check list
- Get your reports posted
- Correct your suspended records
- Run reports
- Gold Star program

# Preparing for year-end

## Year-end reconciliation checklist

All Regular reports for 2023 posted by March 5 deadline.



Inactive employees terminated.



Eligibility reports run (current and prior year).



Suspended records cleared.



# Preparing for year-end

## Get your reports posted

Top **8** benefits for your employer reporting team and your bottom line.



# Preparing for year-end

## Correct your suspended records

When you complete a report and release it, EDX checks it for errors during the overnight batch run.

If it finds an error, EDX “suspends” the report. Each record with an error has a message explaining the error.

### ADD/EDIT A MEMBER RECORD

The status of this member record is: **Suspended**

#### Error Messages For Member

S - Dates reported correspond to a Leave of Absence segment on file; only wage codes of 06, 08, 14 can be reported for Leave of Absence segments.

# Preparing for year-end

## Correct your suspended records

There are four types of error messages.

Type of error	Example message explaining the error
S: Suspended	<i>S - Employee has 600 or more hours of service reported in the plan year; wage code '02 - Regular/Non-Qualifying' may not be used.</i>
B: Bad Format	<i>B - Date of Birth must be numeric.</i>
F: Flagged	<i>F - The Hours Worked (Regular) are greater than 200.</i>
VLID: Valid	There are several reasons why a record may be flagged as valid. Contact your account representative for help.

# Preparing for year-end

## Correct your suspended records

EDX gives four options for addressing a suspended record:

Status	<a href="#">Date Submitted</a>	<a href="#">Report Date</a>	Delete	Edit	Release / Un-Release	Reject/Edit Report	View Details	View Totals
Suspended	06/02/2022	06/04/2022	<a href="#">delete</a>	<a href="#">edit</a>	n/a	<a href="#">View Report</a>	<a href="#">View Details</a>	n/a
Suspended	09/07/2022	09/10/2022	<a href="#">delete</a>	<a href="#">edit</a>	n/a	<a href="#">View Report</a>	<a href="#">View Details</a>	n/a

Deletes entire report.

Displays a Reject/Edit report of all suspended records in report with reason or reasons why each one was suspended.

Lists all suspended records in report. Choose this option to open each suspended report and fix errors.

Displays status of every record in report and its status: posted (PSTD) or suspended (SUSP).

**Learn more**  
[Employer-Guide\\_Ch6\\_Correcting-Suspended-Records.01-23.pdf \(oregon.gov\)](#)



# Preparing for year-end

## Run reports

EDX offers four types of reports that let you check for employee eligibility and status changes.

Report name	What it checks for
<b>Inactive Employment</b>	Employees for whom you haven't reported wages in at least the last three months but have not been terminated in EDX. Does not include working PERS retirees.
<b>Eligibility</b>	Employees whose eligibility to earn PERS benefits may have changed. Allows you to run eligibility reports going back two years.
<b>Year-to-Date Wage and Contribution</b>	Employee wages and contributions paid on those wages for a calendar year.
<b>IAP Voluntary Contribution</b>	Employees who have opted to make voluntary contributions: that is, contributions to their Individual Account Program (IAP) account to make up for the amount redirected to their Employee Pension Stability Account (EPSA).

### Learn more

[Employer-Guide\\_Chap24-Running-Reports.pdf \(oregon.gov\)](#)

# Preparing for year-end

## Gold Star Award

Employers who submit 100% of their Regular reports on time\* the whole calendar year.

\*Within three business days after the due date.



# Employer support

---

- Get informed
- Stay informed
- Help employees stay informed
- Employer Service Center

# Employer support

## Get informed

### Employer reporting guides

#### Beginner reporting

- 1 Overview of PERS*
- 2 Employer Requirements and Support*
- 3 Reporter Roles and EDX Access*
- 4 Creating a Report*
- 5 Creating a Record*
- 6 Correcting Suspended Records*

#### Financial reporting

- 25 Sending an Encrypted Message to PERS*
- 26 Understanding Your Statement*
- 27 Paying Your Invoice*
- 28 How to (Potentially) Reduce Your Bill*

#### Intermediate to advanced employer reporting

- 7 Reporting a New Employee*
- 8 Hiring a PERS Retiree*
- 9 Reporting Wages for a Qualifying Employee*
- 10 Reporting Wages for a Non-Qualifying Employee*
- 11 Reporting a Leave*
- 12 Military Leave*
- 13 Family and Medical Leave*
- 14 Disability Benefits*
- 15 Reporting a Termination or Death*
- 16 Reporting a Retirement*
- 17 Calculating Unused Sick Leave Hours at Termination or Retirement*
- 18 Reporting or Changing “Average Overtime”*
- 19 Completing Work List Requests*
- 20 Creating a Demographic Correction Request (DCR)*
- 21 Viewing Employee Information*
- 22 Changing Employee Demographic Information*
- 23 Submitting an Adjustment Record*
- 24 Running Reports*

*Gray = not yet available*

# Employer support

## Get informed

### New and updated resources

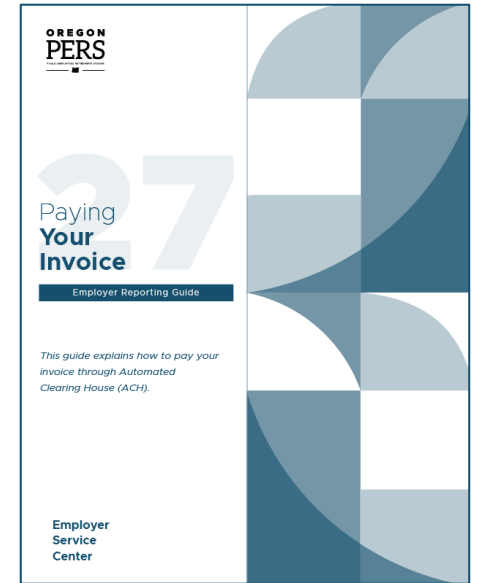
**NEW** [Guide 26, \*Understanding Your Statement\*](#). A deep dive into your EDX statement.

**NEW** [Guide 27, \*Paying Your Invoice\*](#). Instructions for paying your invoice through Automated Clearing House (ACH).

**Updated** [Guide 3, \*Employer Roles and EDX Access\*](#).

**Updated** [Guide 7, \*Reporting a New Employee\*](#).

**NEW** [Video, “The Role of the Employer Reporter.”](#) Shows what an employer reporter does and explains how to learn the role.



# Employer support

## Stay informed

### PERS website

- PERS benefits info
- Employer contribution rates
- Actuarial reports
- Forms and instructions
- FAQs
- Training
- Videos
- Much more

#### EDX support



[Using the EDX reporting system](#)  
[Password reset](#)  
[Requesting help](#)  
[Automated data upload](#)

#### Help, guides, and resources



[Employer Service Center](#)  
[Employer publications](#)  
[Training](#)  
[Employer Advisory Group](#)

#### Actuarial and financial



[Actuarial and financial resources](#)  
[Contribution rates list](#)  
[Governmental Accounting Standards Board \(GASB\) resources](#)

# Employer support

## Stay informed

### Publications

- Newsletter *Employer News*: Emailed monthly. [Newsletter webpage.](#)
- News Bites: Emailed as needed
- Employer announcements: Published to explain new/changed benefits and legislative rules. [Announcements webpage.](#)

Not getting emails? [Sign up through GovDelivery.](#)



## Deadline to make changes to a retiree's account

### *Employers now have 240 days from retirement to make changes*

On January 1, 2024, House Bill (HB) 2283 established a deadline for making changes to a retiree's pre-retirement account. Retirees, PERS' staff, and now employers, too, are unable to make changes to a retiree's account after 240 days into their retirement. After 240 days, the account is locked and cannot be changed (see "Exceptions" below).



### What does this mean?

When a PERS member retires, PERS takes all the wage and service data submitted by the retiree's employers over the retiree's career and uses it to calculate their retirement benefits.

Once PERS calculates the benefits, we send the retiree a Notice of Entitlement report that lists information including their benefit amount, employment history, what calculation method was used, and their beneficiary or beneficiaries.

The retiree has 240 days from the date of the Notice of Entitlement to verify the accuracy of the information and dispute any errors. (Disputing the information does not delay the onset of retirement benefits.)

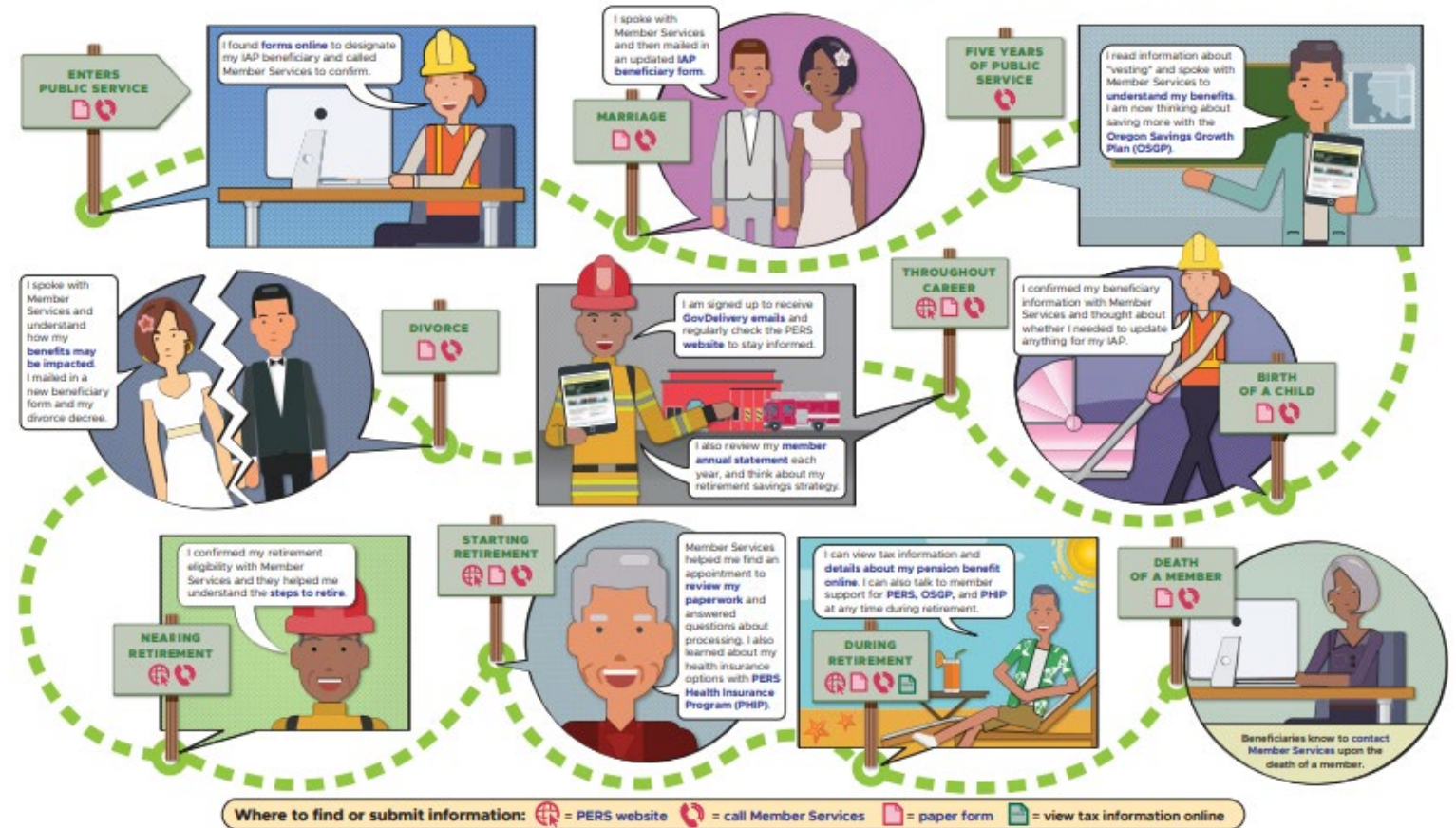
# Employer support

## Help your employees stay informed

### Member resources

- Member Information Center  
Phone: 888-320-7377  
(toll free)  
Phone hours: 8:30 a.m. to 5 p.m., Monday through Friday  
[Member Services Submit a Question form](#)
- [Member education sessions](#)
- [Overview of PERS Benefits for New Employees webpage](#)

## PERS Member Journey: Key moments in your career and life to engage with PERS





# Employer support

## Employer Service Center

### About Employer Service Center (ESC)

PERS ESC provides one-on-one help for employer reporters.

ESC is staffed with specially trained PERS experts who are split into three teams based on employer type:

1. Local governments (such as fire departments, cities, and special districts).
2. State agencies.
3. Schools, universities, and community colleges.



# Employer support

## Employer Service Center

ESC assists employers who are having challenges reporting in EDX, such as:

- Reporting demographic, wage, and hour information.
- Conducting status checks.
- Correcting a suspended record.
- Making changes that only PERS is authorized to make.



# Employer support

## Employer Service Center

### Communication between employers and ESC

#### Phone and email

- Quick questions and status checks, call the Employer Call Center line 888-320-7377 between 8:30 a.m. and 12:00 p.m. Pacific.
- For in-depth questions and assistance, call or email your ESC account representative.



# Employer support

## Employer Service Center

### Communication between employers and ESC

#### Demographic Correction Requests (DCR)

Demographic Correction Request (DCR) is an EDX form you can submit to PERS to request changes that only PERS can make, including:

- Start date
- Termination date
- Last day of service
- Job classification
- Position type
- Average overtime hours
- Contract number of months
- Hire intent
- Unused sick leave
- Contribution start date
- Delete position

Create Demographic Correction Request (DCR).

**Learn more**  
[Employer-Guide-20-Creating-DCR.pdf](#)

# Employer support

## Employer Service Center

### Communication between employers and ESC

#### Work List requests

When PERS needs information from you, we place a request on your EDX Work List. Like a to-do list, your Work List items need to be addressed as soon as possible. Work item types you may see on your Work List:

- Demographic Correction Request
- Disability employment status
- Employer data verification request
- IAP voluntary contribution
- Last day paid leave
- Salary breakdown
- Salary certification
- Termination
- Unused sick leave

#### WORK LIST

##### [Work Item Type](#)

Termination

Unused Sick Leave

Demographic Correction Request

#### Learn more

[Employer-Guide\\_19\\_Completing-Work-List-Requests.pdf](#)

# Employer support

## ESC projects

### OPSRP loss of membership (LOM)

- Each year, PERS runs the **OPSRP LOM batch** on the third Friday of January during the PERS nightly batch schedule.
- The OPSRP LOM batch updates member accounts to apply **LOM status** to those who meet the LOM criteria as of December 31 of the prior year.
- If EDX records indicate the employee is still working on or after January 1 of the current year, ESC adds an employment end date (termination) of December 31 of the prior year.
- If you have an impacted employee who is still working for you, **submit a DCR** to request PERS add a January 1 employment start date to continue the employment with the same qualifying or non-qualifying hire intent originally posted on the previously reported employment segment.



# Employer support

## Upcoming ESC projects

### Educational service credit for school employees

- If the last day of school for the year is December 15, ESC manually modifies the last day of service from 12/15 to 12/16.
- This allows the member to receive the correct amount of educational service credit (members must work majority of month to get credit).
- If last day school was in session in December is before December 15, ESC will not make changes to the account. Member will not receive educational service credit for July and August for that year and will not receive service credit for December.

**SERVICE  
CREDIT**

# Questions and answers

---



# Questions and answers

## Questions?



# OREGON PERS

PUBLIC EMPLOYEES RETIREMENT SYSTEM



# THANK YOU

